



Win 7 Smart Tool For Intel SKL platform

Before Install Windows 7 in SKL (Skylake) platform, we have to preload XHCI driver for installation. However, the way preloading XHCI driver is complicated for end users. MSI develops a program called **Win 7 Smart tool** for easing the difficulty of the installation process . Users can install Windows 7 in SKL platform easily by the SOP. Please follow the instruction to operate.

Installation Mode Restriction

File Location \ Mode	UEFI Mode	Legacy Mode
USB Storage Device	✗	✓
ISO File In DVD-ROM	✓	✓

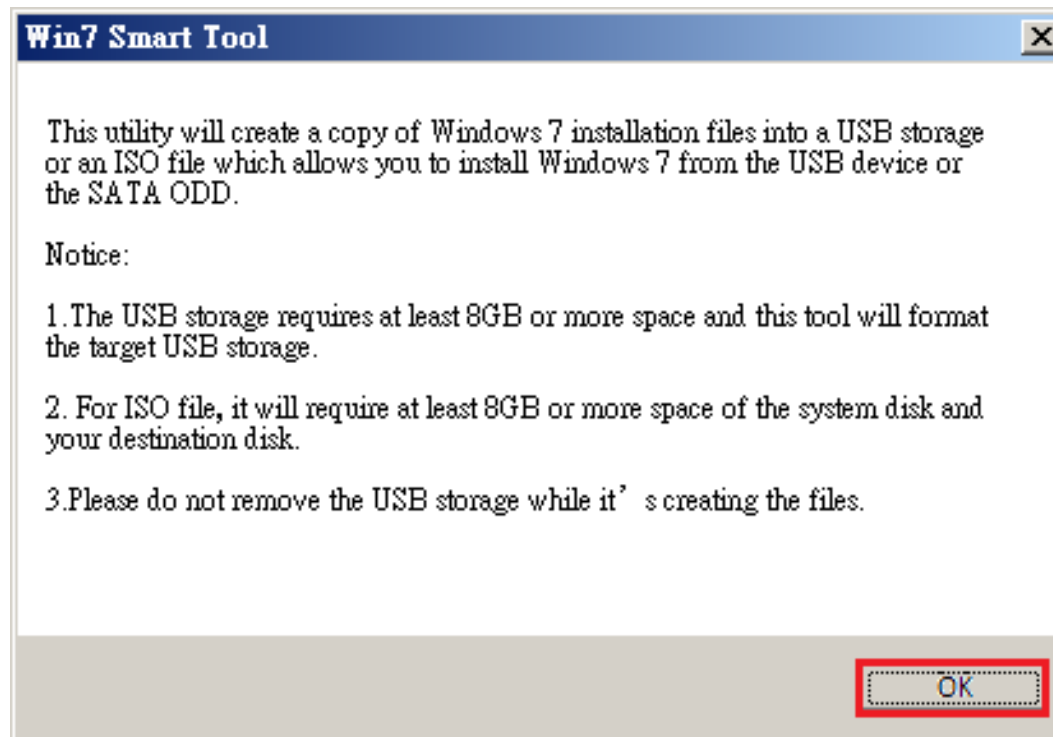
Notice

1. Support OS platform: **Win 7** (32/64bit), **Win 8.1** (32/64bit), or **Win 10** (32/64bit)
2. Prepare one USB Storage Drive which size need to more than **8GB** or above.
3. The USB device will **be formatted**.
4. Please do not **remove target device** or **source file** when creating the Win 7 installation file.
5. When storage device is USB pen drive, user cannot install Win 7 with UEFI mode.
6. Plug in only **one USB storage device** when using the smart tool.
7. **Disable Anti-Virus** software during use Win 7 Smart Tool.
8. Download [Win 7 Smart Tool](#)

Step 1 – Execute Win 7 Smart Tool (En)



1. Download Win 7 Smart Tool then Unzip to C:\
2. Execute the program “**Window_7_ISO_Modify.exe**” in the folder.
3. It will pop up a notice message to remind again.



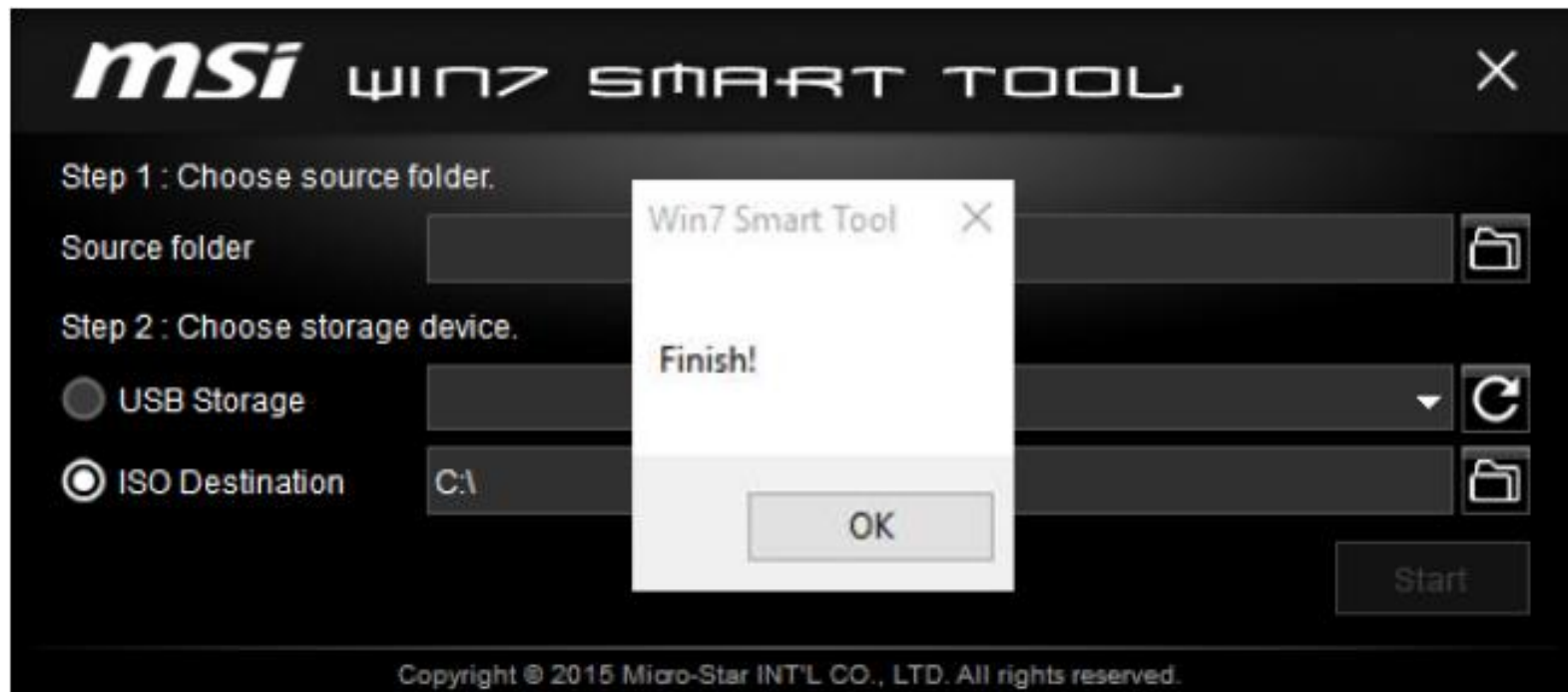
4. Press **OK** to continue the process.
5. Here provide **2** ways to create Win 7 Installation media (**USB Storage** or **ISO for disc**)
We will guide you in next page.

Step 2.1 – Create by ISO for disc recovery



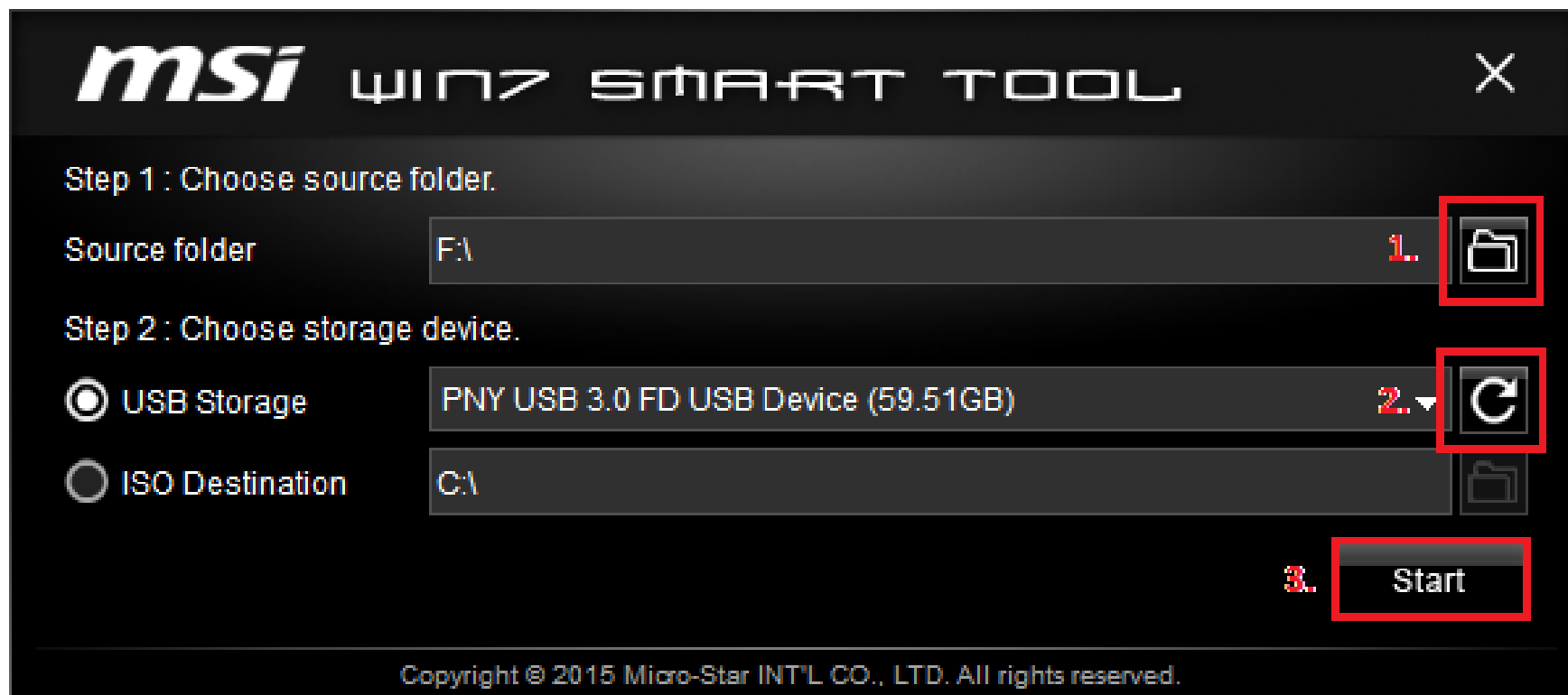
1. Choose Win 7 Install source folder.
2. Select ISO Destination location.
3. Press “Start” to create ISO file.


Step 2.2 – Create by ISO for disc recovery



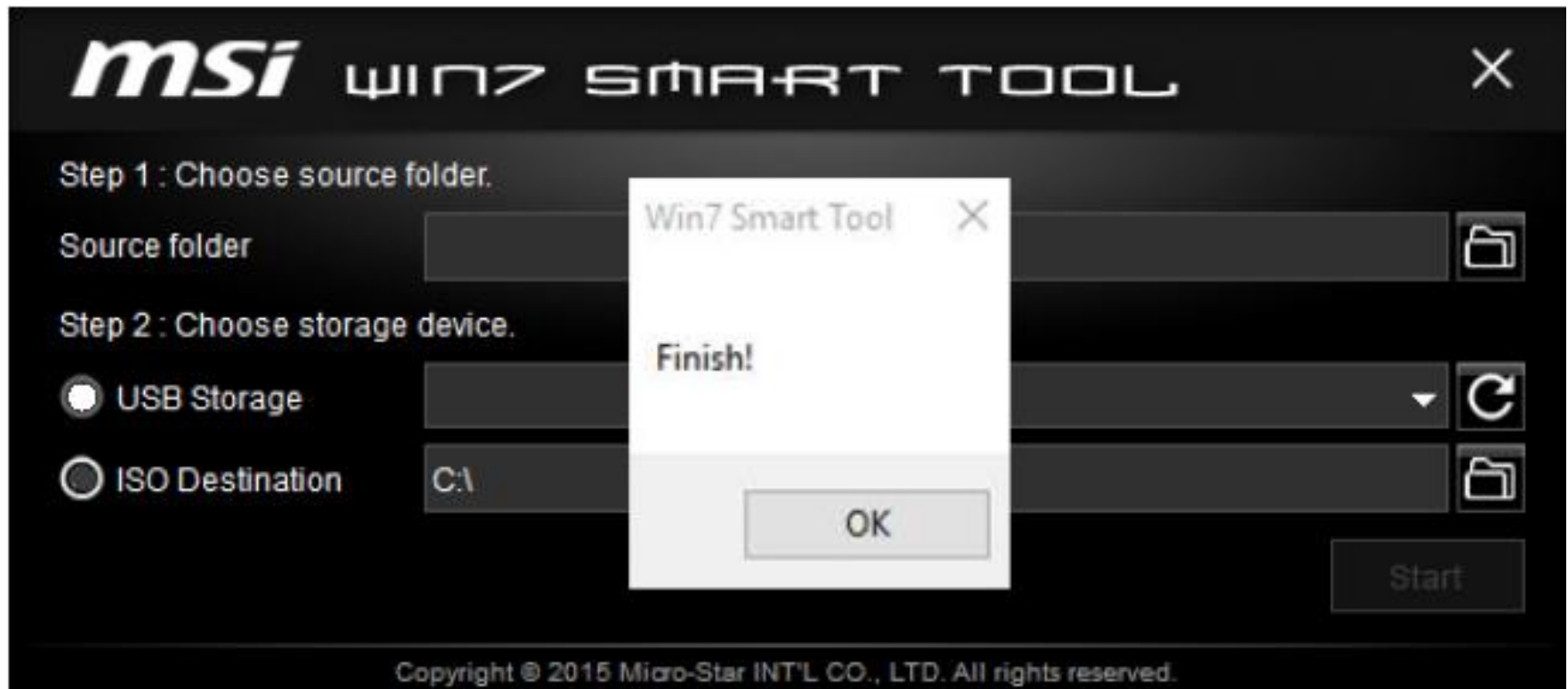
4. Around 15~ 20 mins, the process finish will pop up a message to notice.
5. The ISO Image will located in the drive, please burn ISO to disc for Win 7 installation.

Step 3.1 – Create by USB for recovery



1. Choose Win 7 Install source folder.
2. Plug USB Flash in PC. The press to  load USB drive.
3. Press “Start” to create USB Drive for Win 7 Installation.

Step 3.2 – Create by USB for recovery



4. Around 15~ 20 mins, the process finish will pop up a message to notice.
5. The USB storage device is now ready for Win 7 installation.

**Thanks for
your attention**

msiTM